



GMT MONTHLY MEMBERSHIP PROGRESS REPORT

Results as of: 5/31/2020

GMT Constitutional Area 1, Group J

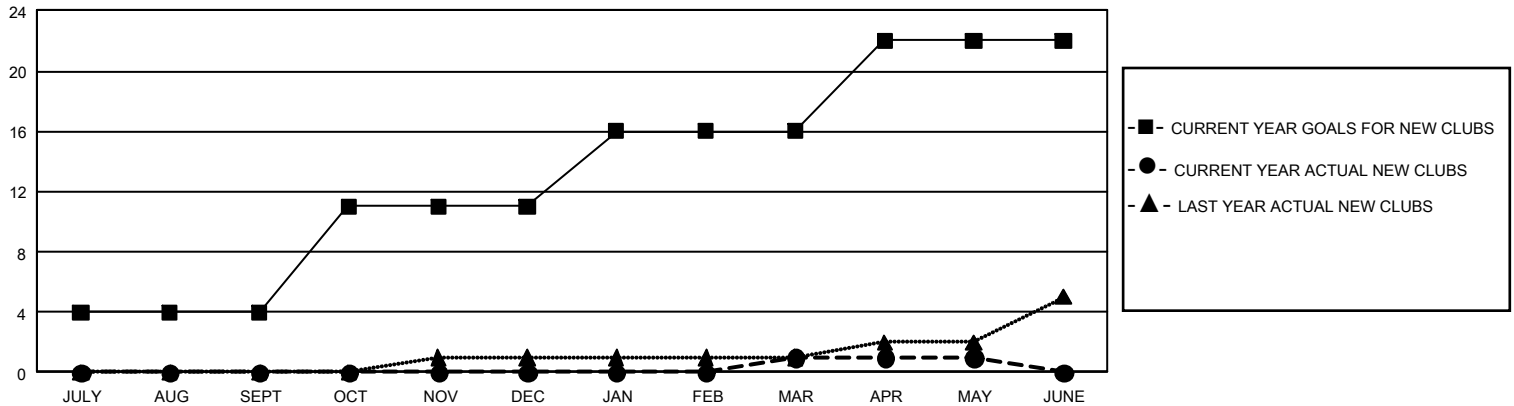
GMT: OPEN

REPORT DOES NOT INCLUDE CLUBS IN UNDISTRICTED AREAS.

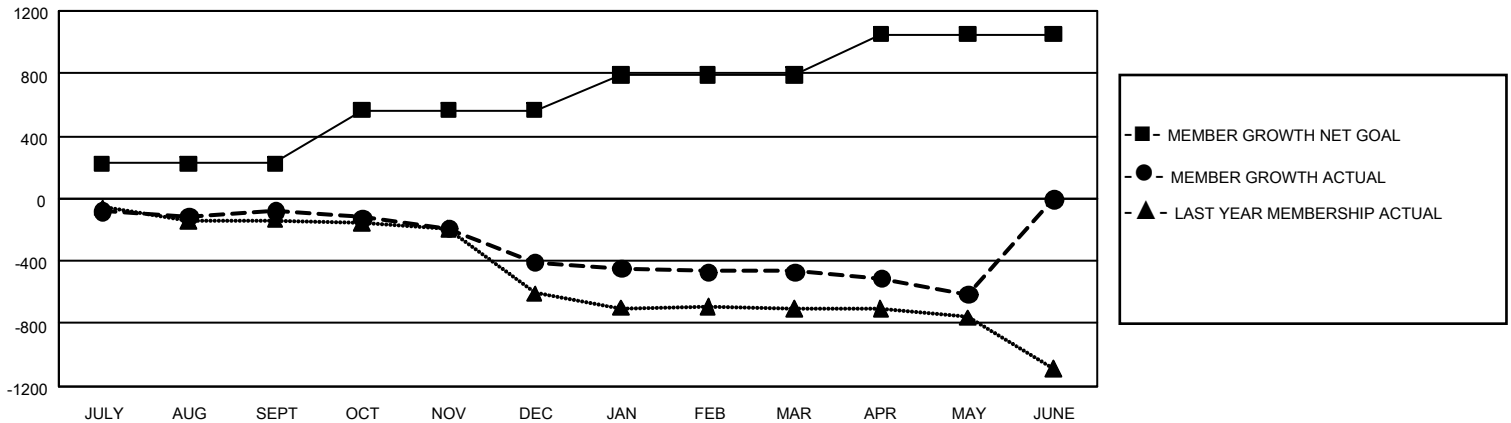
Clubs			
RESULTS FOR 2019-2020			
QUARTER	NEW CLUB GOAL	NEW CLUBS	DROPPED CLUBS
JULY/AUG/SEPT	12	0	2
OCT/NOV/DEC	21	0	8
JAN/FEB/MAR	15	1	3
APR/MAY/JUNE	18	0	1

Members			
RESULTS FOR 2019-2020			
QUARTER	MEMBER GROWTH NET GOAL	MEMBER GROWTH ACTUAL	DROPPED MEMBERS ACTUAL (including transfers)
JULY/AUG/SEPT	669	429	462
OCT/NOV/DEC	1,029	327	637
JAN/FEB/MAR	675	361	399
APR/MAY/JUNE	780	70	204

GOALS AND ACTUAL NEW CLUBS CUMULATIVE



GOALS AND ACTUAL MEMBERS CUMULATIVE



DROPPED CLUBS: 14	373 CLUBS OF 752 ADDED 1 OR MORE NEW MEMBERS	<u>GENDER DISTRIBUTION</u> MALE 13,301 (71.52%) FEMALE 5,297 (28.48%)
<u>DROPPED MEMBERS</u> DECEASED 234 CLUB CANCELLED 75 OTHER 1,391 <hr/> TOTAL 1,700	CLICK HERE FOR CUMULATIVE MEMBERSHIP DATA	TOTAL FAMILY UNIT MEMBERS 3,386 FAMILY MEMBERS PAYING HALF DUES 1,723